

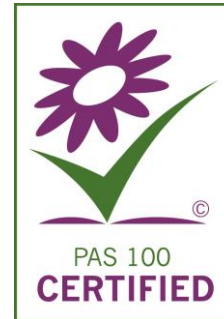


Update on the Green Gas Certification Scheme

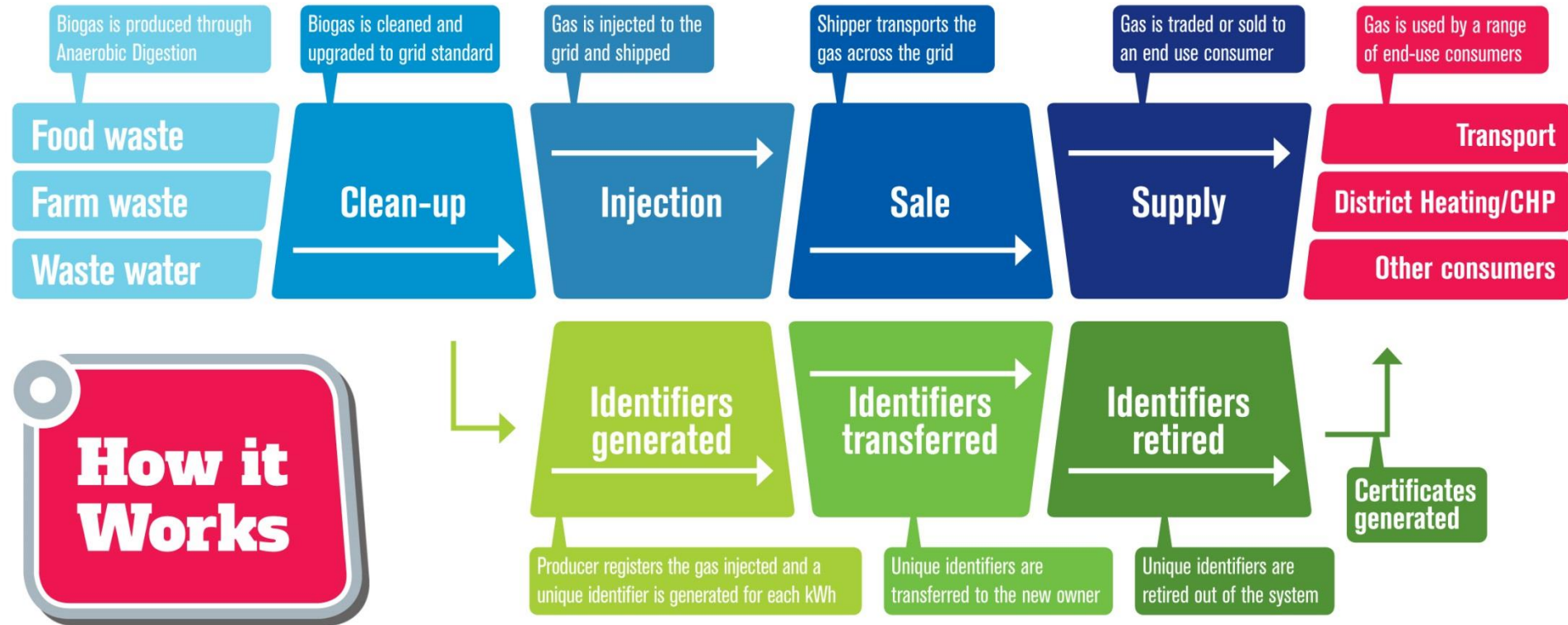
Ciaran Burns

UK Biomethane Day 2016

20 April 2016



GGCS process at a glance



GreenGas

CERTIFICATION SCHEME

Date Created:	03/06/2013 17:43:38
Date Printed:	02/10/2015 17:02:36
Certificate issued to:	The Duchy of Cornwall
Renewable Gas Guarantees of Origin:	G0001BA00000001E1212 to G0001BA00600000E1212
Injection Date:	December 2012
Technology/Feedstock:	Biogas from agricultural activities
Injection Location:	England
Amount:	600000 kWh
Certificate Pin Number:	1ebd31
Green Gas Producer:	JV Energen LLP Rainbarrow Farm, Martinstown Road, Dorchester, DT2 9TF, England
Green Gas Supplier:	Barrow Shipping Limited The Maltings, 11-15 Brayford Wharf East, Lincoln, LN5 7AY

About this Certificate

© Renewable Energy Assurance Ltd 2011. 'Green Gas' and the Green Gas logo are trademarks of Renewable Energy Assurance Ltd. All rights reserved. Only certificates produced by the Renewable Energy Assurance Ltd using its proprietary systems are valid. You must not copy for an improper purpose, falsify, counterfeit or tamper with this certificate. It may be an offence to do so, or to knowingly provide a certificate which has been interfered with. For further information on this certificate, please visit www.greengas.org.uk/certificates.

1ebd31c0452e46d449b2791301688d
1054c8b100000702e66b4f3a1105

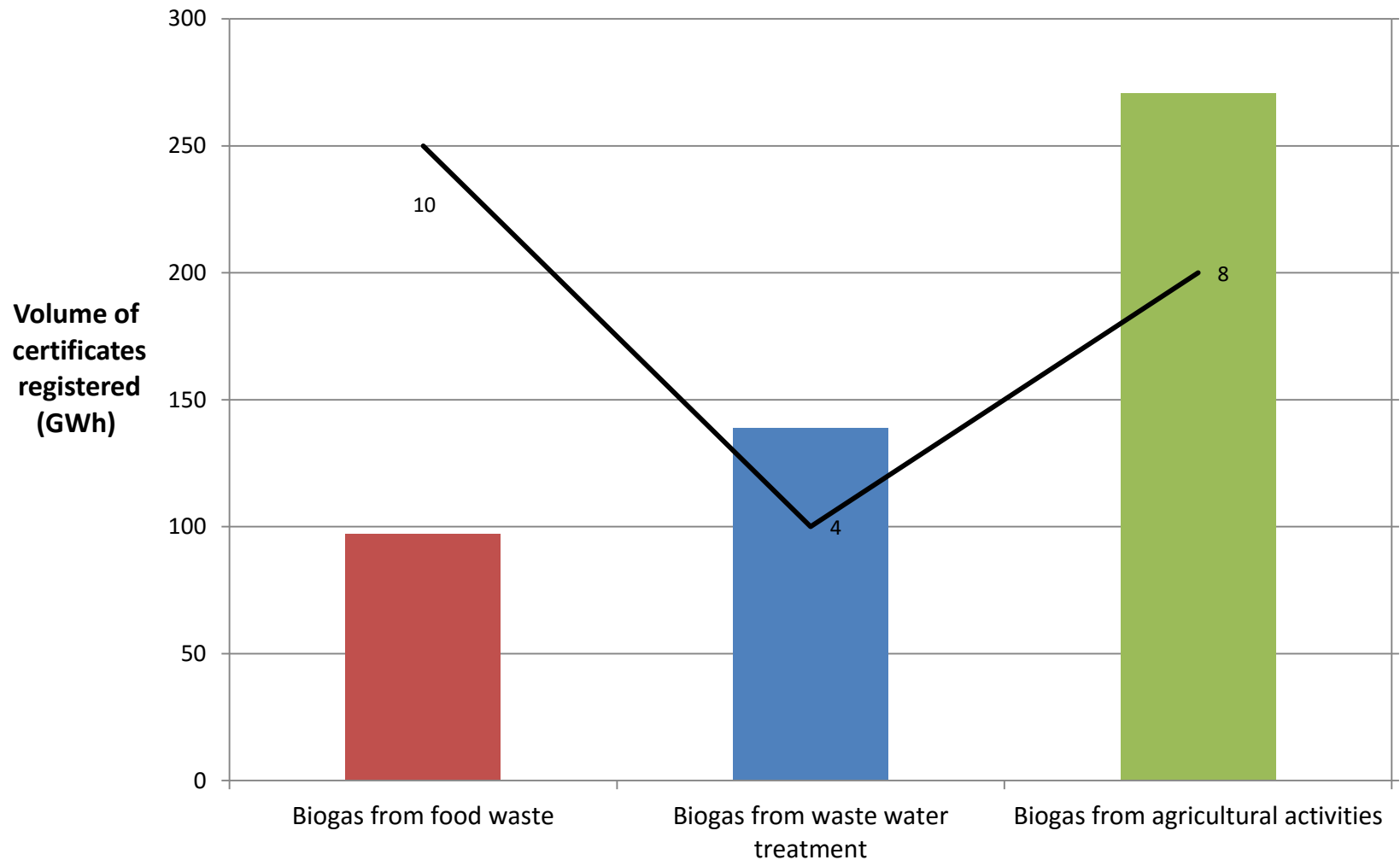
Information

- Date of creation
- Customer name
- Range of RGGOs
- Injection Date
- Technology/feedstock
- Country of injection
- Total amount kWh
- Producer
- Supplier
- Pin Code

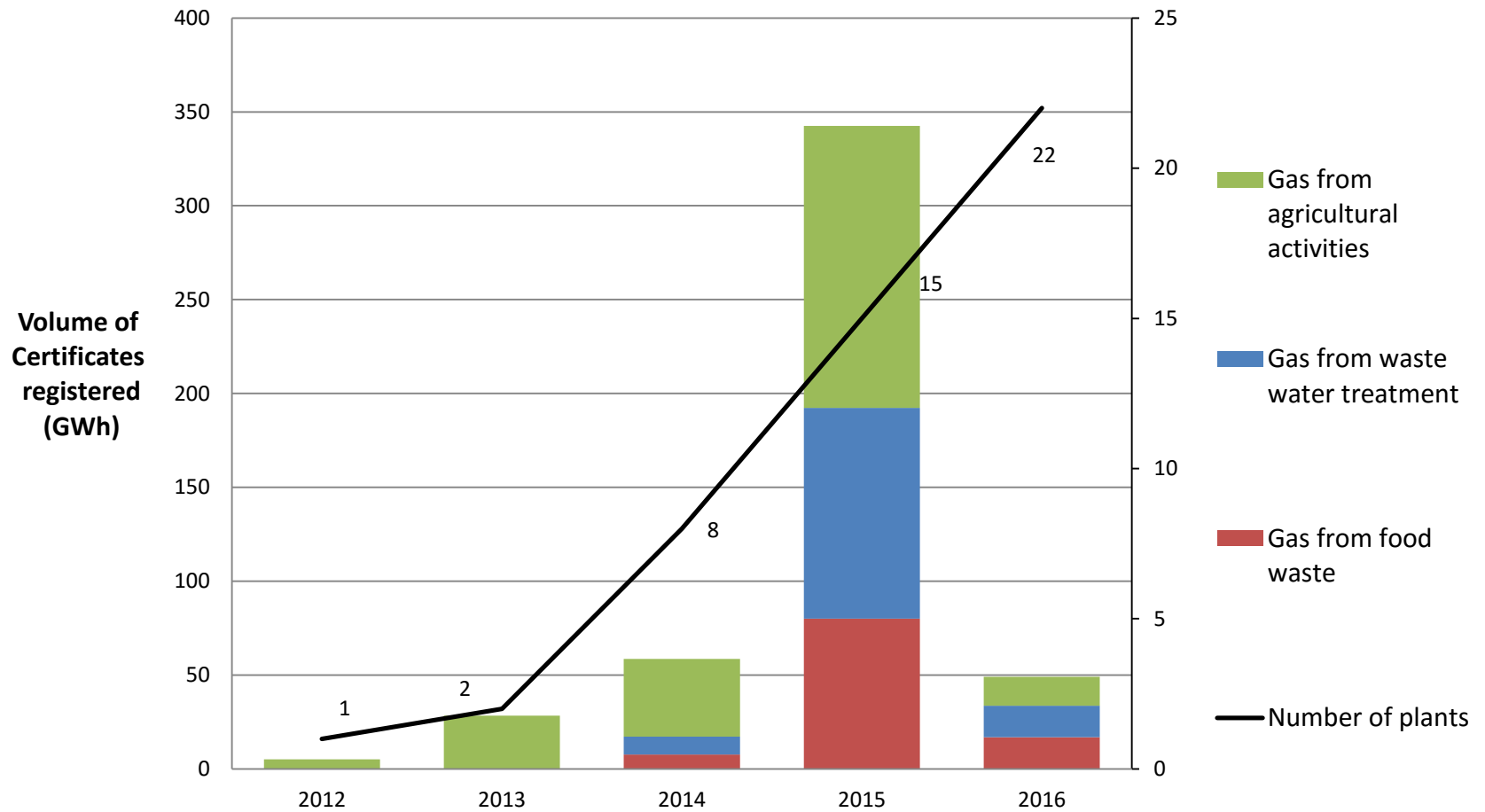
Current scheme status

- 22 producers registered
- Capacity of producers 1.2 TWh per annum
- 18 suppliers registered
- Over 483 million kWh registered on the scheme since 2012
- 194 million kWh certificates sold

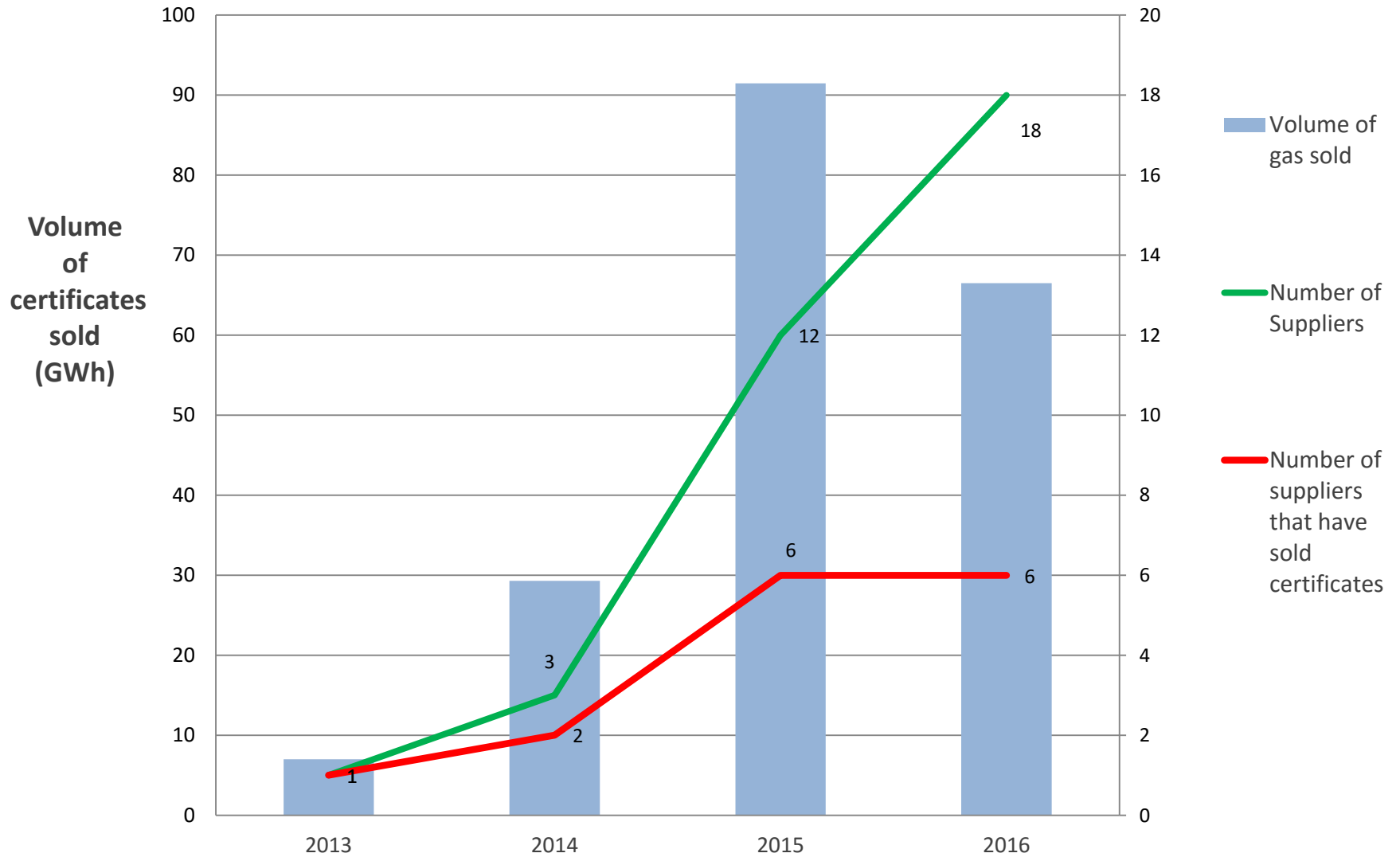
Total volume of units registered and number of producers



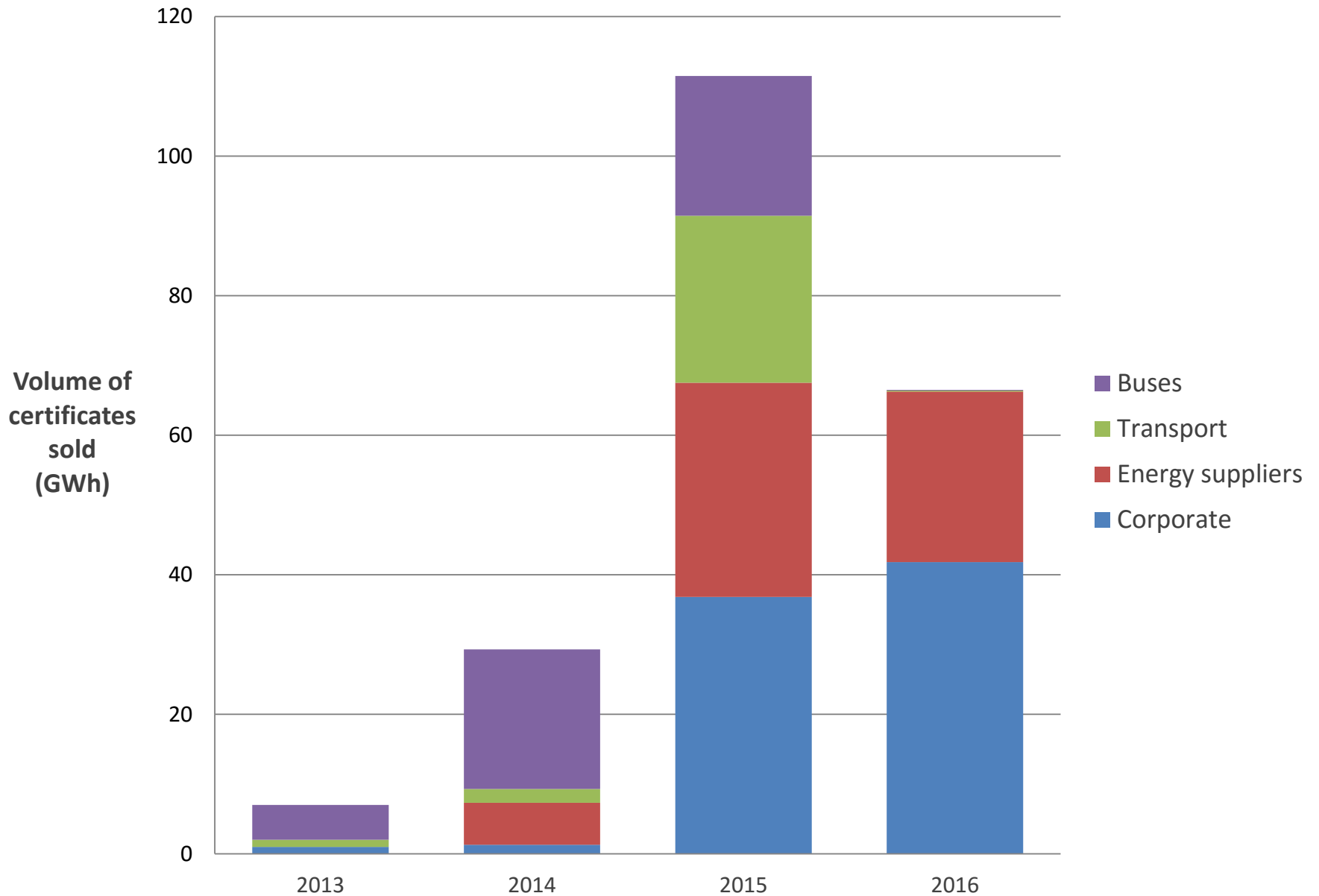
Number of members registered and the volumes of gas registered between 2012 and 2016



Volume of certificates sold and number of suppliers on the scheme



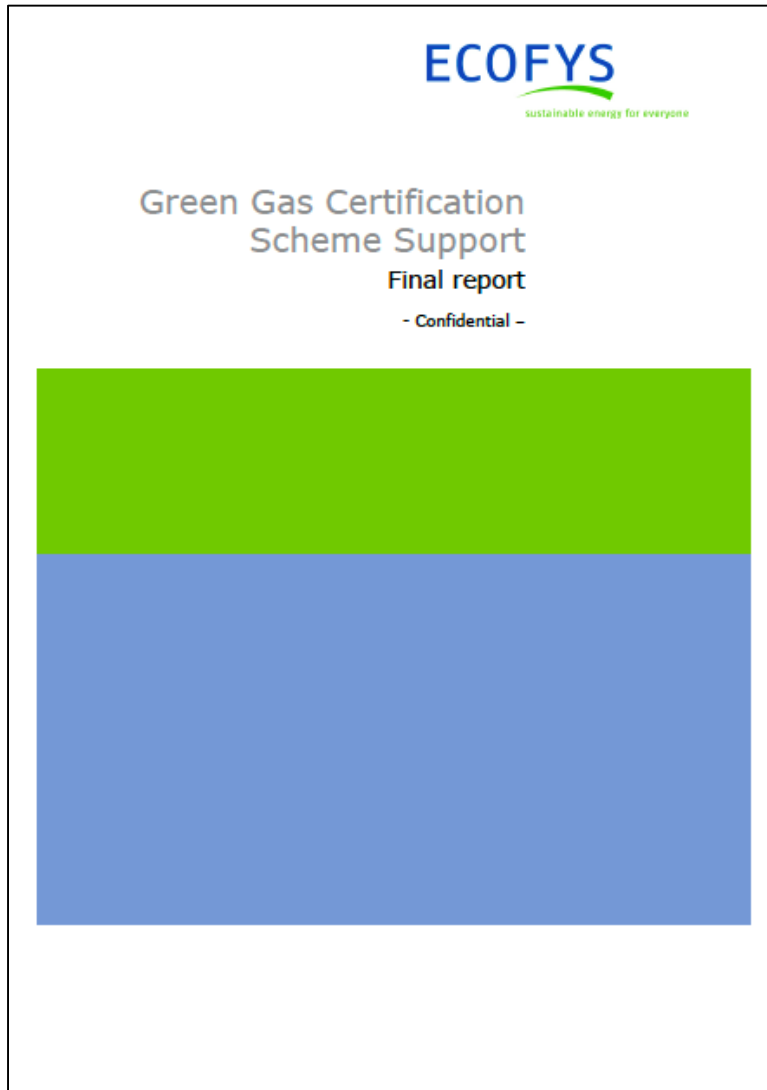
Volume of certificates sold to each market sector each year



GGCS successes to date

- Low Carbon Emission Bus
 - Green Gas Certificates (GGCs) proof of biomethane use – providing access to BSOG subsidy
- Defra GHG reporting
 - Inclusion of GGCs as reporting tool...
 - ...Defra sitting on conclusion for 3 years now
- Explored use of GGCs as part of Zero Carbon Homes policy
 - But Chancellor scrapped Government ambition on this in July 2015

GGCS study by Ecofys commissioned



- how biomethane is accounted for by Member States in reporting to the European Commission
- basis for calculating and reporting the greenhouse gas emissions and associated savings of biomethane at the international, EU and UK level; and
- the concept of the 'claims' end-use consumers and the scheme itself can credibly make relating to the purchase of green gas.

Looking Forward

- GGCs as a reporting tool in GHG Protocol
 - International standards on how organisations should report the GHG emissions associated with their operations.
- London Zero Carbon Homes policy
 - ZCH standard to be introduced in London 1 October 2016 –already developer interest in green gas
 - One major development already committed to use of green gas certificates
- Use of green gas/green gas certificates in transport sector
 - Considered in detail in REA *'Use of gaseous fuels in transport'* REA report
 - Forthcoming RTFO will consider potential of grid-injected biomethane

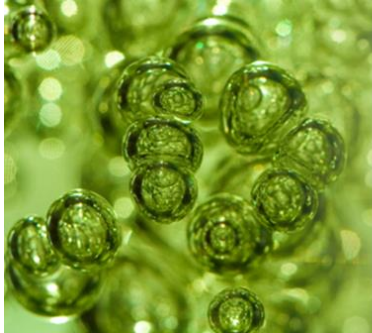
WRI GHG Protocol

- The World Resource Institute Greenhouse Gas Protocol is the most widely used international accounting tool to quantify and manage GHG emissions.
- Used by many large and multinational companies
- WRI recently changed guidance to allow companies to buy low carbon energy through the grid instead of using a grid average carbon figure.
- Biomethane delivered through the grid now specifically recognised
- The GGCS starting a dialogue with WRI so that certificates through this scheme are recognised
- Response imminent

CO₂ emission figure

- Currently no CO₂ figure on the certificate
- Biomass fuel used by RHI participants must meet a lifecycle GHG emissions target of 34.8g CO₂ eq/MJ of heat;
- Since all biomethane on the GGCS has received the RHI then it is possible to say that all units of gas has emitted no more than 34.8g CO₂ eq/MJ
- Dependent on the outcome of WRI discussion

For more information



The Green Gas Certification Scheme

The Green Gas Certification Scheme (GGCS) tracks biomethane, or 'green gas', through the supply chain to provide certainty for those that buy it.

Each unit of green gas injected into the grid displaces a unit of conventional gas. So the GGCS tracks each unit of green gas from its injection into the distribution grid, to any trades, to its sale to a consumer, or group of consumers. It tracks the contractual rather than physical flows to ensure there is no double-counting from production to end use.

The GGCS is run by the Renewable Energy Association's subsidiary, Renewable Energy Assurance Ltd. GGCS participants oversee the way it is run, on a not-for-profit basis.

www.greengas.org.uk

Twitter: [@GreenGasCertificates](https://twitter.com/GreenGasCertificates)

cburns@greengas.org.uk